

@-box *micro*

ventilation **41**

Compact
Silent
Versatile
User-Friendly

@-box micro centrifugal in-line fan combines innovative features to increase efficiency, reduce noise and make installation easier.





@-box^{micro}

CENTRIFUGAL IN-LINE SLIM BOX



**Ultra slim
h = 122 mm**

**PATENT
PENDING**

@-box^{micro} centrifugal in-line fan is **extremely flat and compact** (h=122 mm) and has been designed to offer the best solution in those installations that require **small to medium air flow** and where a **very narrow height or limited space is available**.

Based on the concept of modularity, *@-box^{micro}* offers a **vast choice of inlet & outlet options** to enable ducting from multiple sources and to suit a wide range of residential and commercial applications.

@-box^{micro} flexible solutions and **advanced technical features (silence, high performance, trouble free and long life operation)** provide a powerful and ideal combination between final users' requirements and the technology of a high specification product.

Technical features

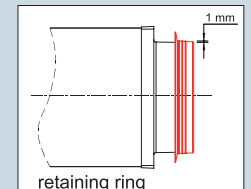
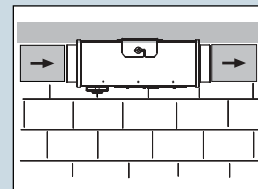
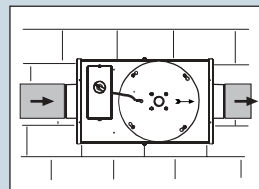
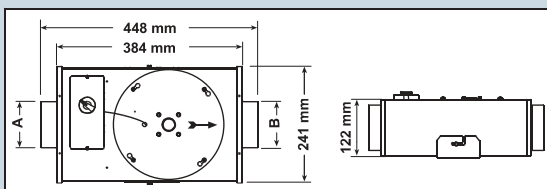
- Casing in galvanized steel sheet. Inlet and outlet in shock proof self-extinguishing high quality technopolymer.
- **Integral junction box.**
- Backward curved blades dynamically balanced on external rotor motor provided with non-self-resetting thermal cut-out.
- **Swing-out motor and impeller** for ease of cleaning and maintenance.
- Ball bearing motor, permanently lubricated for maintenance free operation and continuous running.
- Can be used with flexible and rigid ducting.
- Supplied with ceiling/wall fixing plate.
- Supplied with **retaining rings** to avoid the use of clamps and acoustic insulation polyurethane foam
- Fan complies with EN 60335-2-80, EC Low Voltage Directive 73/23 – 93/68 and EC Directive EMC 89/336.

Versions

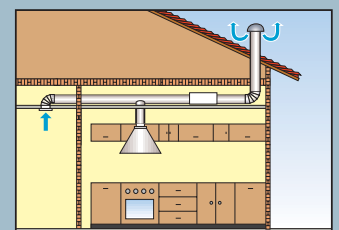
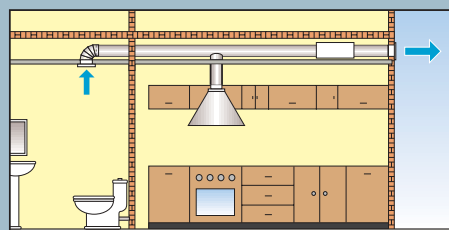
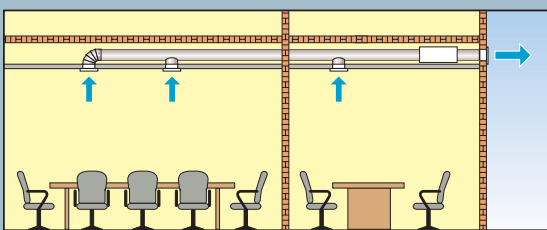
- Inlet & Outlet diameters combinable from 80 to 125 mm
- Timer - Comfortimer **NEW** (integral adjustable from 3 to 25 mn)
- 2 speed
- Integral 5 speed controller
- "Low speed & Boost" facility for continuous ventilation

COMPACT SIZES

DIMENSIONS (mm)



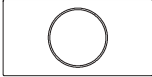


APPLICATIONS



FLEXIBILITY

MODELS combinable spigots from 80 to 125 mm

INLET (A)			OUTLET (B)		
ø100 (ø96) ø125 (ø120)		ø80/80 (ø76 / ø76) ø80/100 (ø76 / ø96) ø80/125 (ø76 / ø120)		ø100 (ø96) ø125 (ø120)	

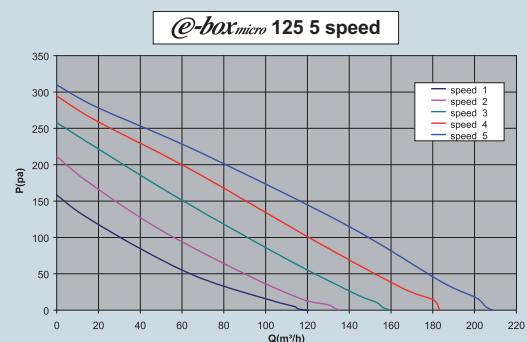
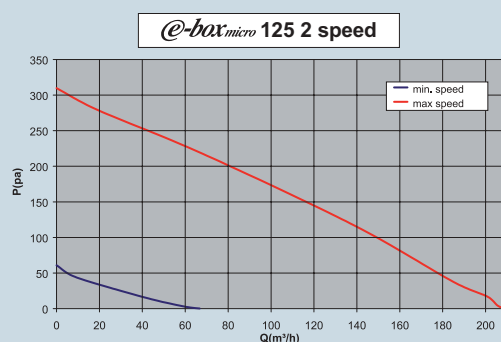
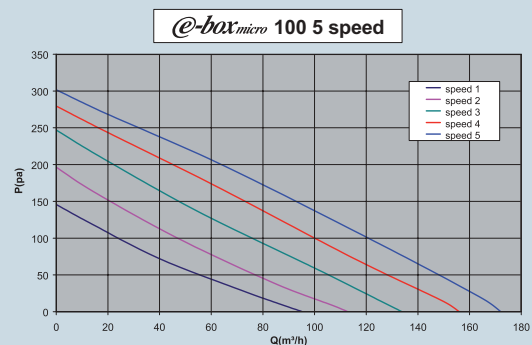
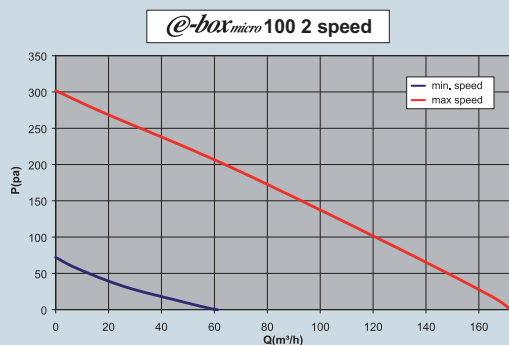
PERFORMANCE

SPECIFICATION

@-box _{micro}	RPM	m ³ /h max	l/s max	Pa max	dB(A)* @ 3 m max	W max	V Hz	Speed controller	Protection
100 - 100	1960	172	48	302	34,4	60	230-50/60	RVS / RVN	IPX4
125 - 125	1890	208	58	310	36,9	61	230-50/60	RVS / RVN	IPX4

*Lp(A) at 3 m in a non reverberating room at the maximum fan efficiency

CURVES



SILENCE & COMFORT

- Aerodynamic constructive features to avoid any vibration
- Acoustically isolated (insulation foam on request)
- Suitable for continuous running (24H)
- Speed controllable (see controllers pages 63/66)

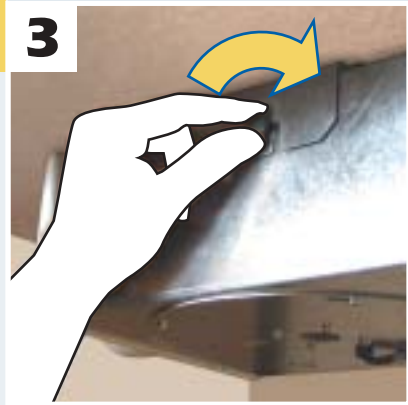
USER FRIENDLY / FIT & FORGET



1
Fix the plate



2
Hook the fan



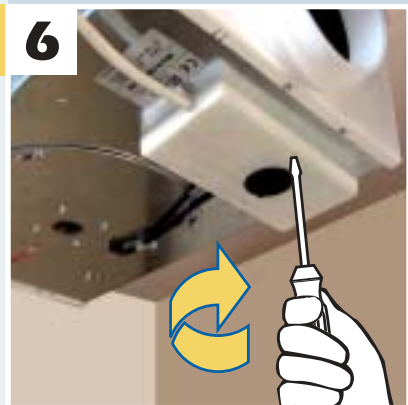
3
Fix the fan turning the knobs clockwise



4
Remove the terminal for easy connection



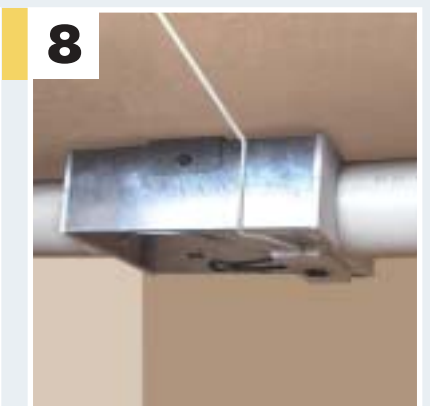
5
Fix the connected terminal into the integral junction box



6
Fix the junction box cover



7
Install duct



8
Installation completed